

PACIFIC INDUSTRIAL ELECTRIC
INVENTORY

DATE: April 4, 2005

LOCATION: 3Y1-00o ITEM INV. # 59 PIE ITEM #
DESCRIPTION: TRANSFORMER, PADMOUNT

MFG. NAME: GEC ALSTHOM CATALOG NO.:
MODEL# D041668-D1736 SERIAL #: PDI-1103

SPECIFICATIONS / INFORMATION

| | | | |
|------------|-----------------------|-------------|-------|
| VOLTS: | 13800-2400 480Y-277 | NEMA TYPE: | 3R |
| AMPS: | | FUSEABLE: | NO |
| PHASE: | 3 | FUSE TYPE: | N/A |
| Hz: | 60 | HEIGHT: | 89" |
| POLES: | 3 | LENGTH: | 93" |
| KVA: | 2500 | WIDTH: | 73.5" |
| PRIMARY: | 7200/12470/7200 | WEIGHT: | 14240 |
| SECONDARY: | 480Y-277 | KIRK KEY: | NO |
| k AIC: | | NEW: | NO |
| | | PHOTO FILE: | YES |

NOTES:

Unit is marked "1184"; equipped to be switchable for "Dual Voltage" & "Delta - Wye"; and has lightning arrestors installed

TRANSFORMER NAME PLATE DATA

MANUFACTURE'S ADDRESS:

NAME: GEC ALSTHOM
STREET 1:
STREET 2:
CITY:
STATE:
ZIP:

PHONE #:
FAX #:

D.O.M.
OIL FILLED: YES
GAL. CAP.: 555
SHIELDING:
DELTA / WYE: YES & WYE-WYE

COOLING CLASS: OA
CATALOG #: 0
INSULATION SYS.:
RISE: 65°C
LIVE FRONT: YES

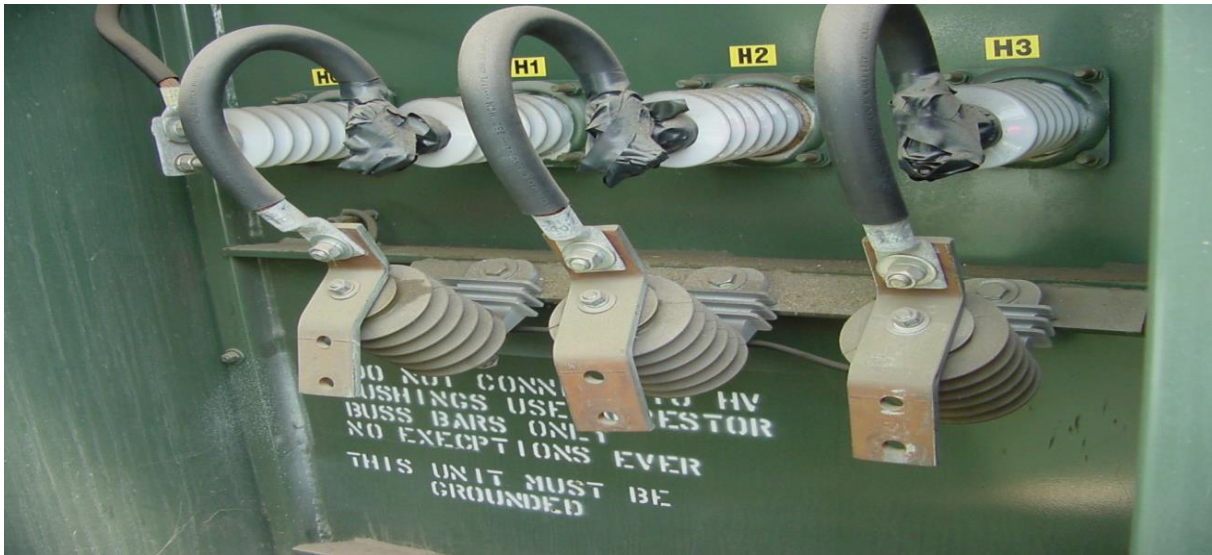
NOTES: 6.17% IMPEDENCE; BIL = HV 95KV, LV 30KV;;ALUMINUM WINDINGS

| Delta Voltage | Wye Voltage | TAPS |
|---------------|-------------|------|
| 4 - 5 | 2520 | A |
| 4 - 6 | 2460 | B |
| 3 - 6 | 2400 | C |
| 3 - 7 | 2340 | D |
| 2 - 7 | 2280 | E |
| 2400 | 4160 | D |
| | | |
| | | |

INVENTORY REMOVAL DATE: _____

PURPOSE:





| | | | | | | |
|---|------------------------------------|------------|---------------------------------|---------------------|--------------|------------|
| KVA | 2500 | OA/ | 65° C RISE | ΔVOLTS | TAP | Y VOLTS |
| HV | 2400/4160Y/2400 X 7200/12470Y/7200 | BIL | 95 KV | 7967 | A | 13800 |
| LV | 480Y/277 | BIL | 30 KV | 7621 | B | 13200 |
| 3 PHASE 60 HZ TRANSFORMER. 6.17 % IZ AT BASE RATING | | | | 7430 | C | 12870 |
| COND. HV | AL LV | AL FLUID | OTL GAL. | 7200 | D | 12470 |
| ELEMENT WT. | 5231 | LBS. | TOTAL WT. | 14240 | LBS. | 6928 |
| FLUID | 15.50 | IN. | FROM UPPER EDGE OF H/H AT 25°C. | 2400 | E | 12000 |
| CHANGES | 50 | IN./ 10°C. | MAX 10. PSI POS. 8.0 PSI NEG | | | 4160 |
| SERIAL # | P01-1103 | | | 11-32, 12-21, 22-31 | SWITCH CONN. | 11-21-31-N |

CAUTION: TAPCHANGER MUST BE IN 'D' POSITION FOR 2400/4160Y/2400 VOLTS

FIG. 1

FIG. 2

FIG. 1 FIG. 2

GEC ALSTHOM
T&D

D041668-D1736



| KVA | | OA/ | | 65° C RISE | | /VOLTS | | TAP | | V VOLTS | |
|-----|-----------------|-----|------------------|------------|----|--------|------|-----|--|---------|--|
| HV | 2400/4160Y/2400 | X | 7200/12470Y/7200 | BIL | 95 | KV | 7367 | A | | 13900 | |
| LV | 480Y/277 | | | BIL | 30 | KV | 7621 | B | | 13200 | |
| | | | | | | | 7400 | C | | 12670 | |
| | | | | | | | 7200 | D | | 12470 | |
| | | | | | | | 6400 | E | | 12000 | |
| | | | | | | | 2400 | | | 4160 | |

PHASE 60HZ TRANSFORMER. 6.17% IZ AT BASE RATING
 COND. HV AL LV FLUID GAL. 500 LB. 40.00
 ELEMENT WT. 32.0 LBS. TOTAL WT. 112.00 LBS.
 FLUID 15.50 IN. FROM UPPER EDGE OF H/H AT 25° C.
 CHANGES 30 IN. / 10° C. MAX PSI POS. 0 PSI NEG

SERIAL # PD1-1103

CAUTION: TAPCHANGER MUST BE IN '0' POSITION FOR 2400/4160Y/2400 VOLTS

FIG. 1

FIG. 2

11-22 12-21 22-31 31-20 SWITCH DOWN 11-21-21-N

D041668-D1736

GEC ALSTHOM

T&D

PACIFIC INDUSTRIAL
 ELECTRIC CO.
 Phone: 1 (800) WE TEST-1
 SERVICED CALIBRATED TESTED

 DATE 6/2/11 FOR No. 1